

# KENNINGTON FLOORING LTD

Your complete flooring solution

We offer a completely free estimating service.

However if you wish you can measure your own rooms etc, and bring the sizes in with you when you visit our showroom to choose your new flooring.

To help you with this we have some easy to follow diagrams which you can print off and then add your measurements.

Call us to discuss your requirements on **01865 401 700** or visit our website:

**[www.kenningtonflooring.co.uk](http://www.kenningtonflooring.co.uk)**

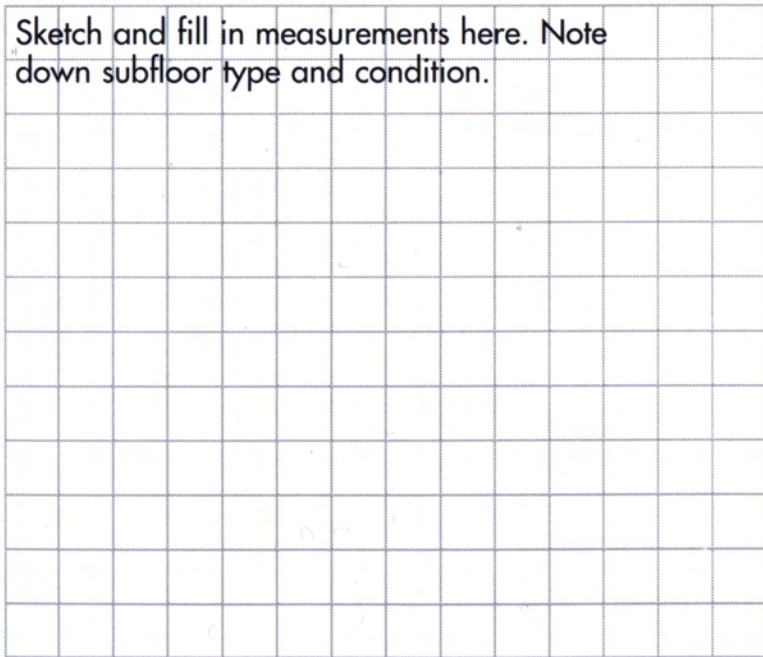
Simply sketch your rectangular room and fill in dimensions here. Note down subfloor type and condition

Simply sketch your rectangular room and fill in dimensions here. Note down subfloor type and condition

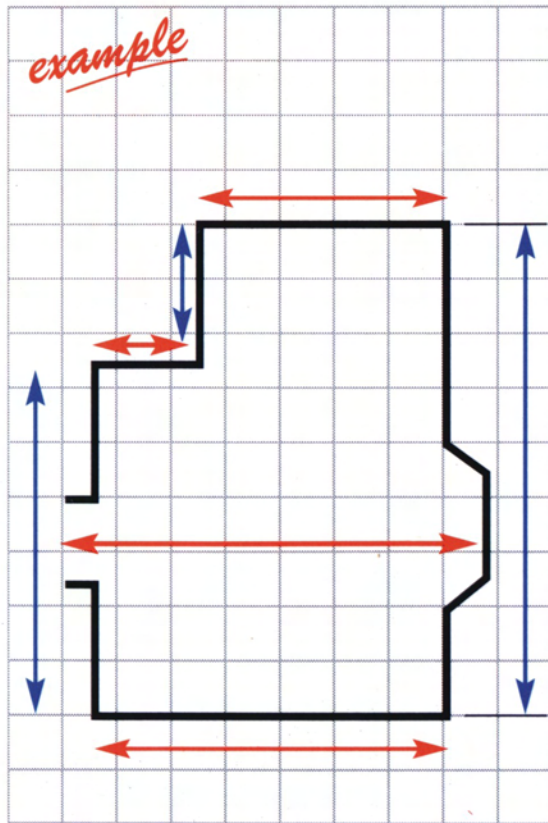
A diagram showing a rectangle on a grid. The height of the rectangle is indicated by a blue double-headed vertical arrow on the left, spanning 10 grid units. The width of the rectangle is indicated by a red double-headed horizontal arrow at the bottom, spanning 5 grid units.

Odd shaped rooms are just as easy to measure as rectangular rooms, but you will need to take more measurements.

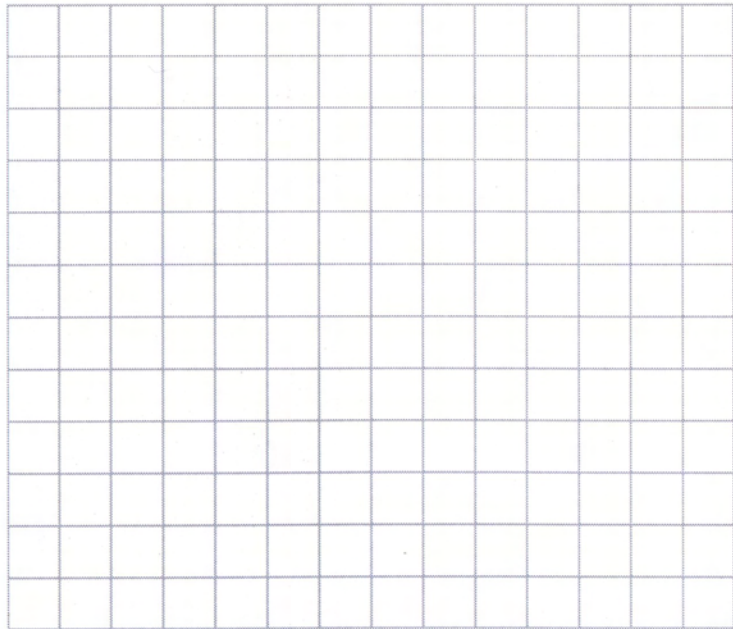
Sketch and fill in measurements here. Note down subfloor type and condition.



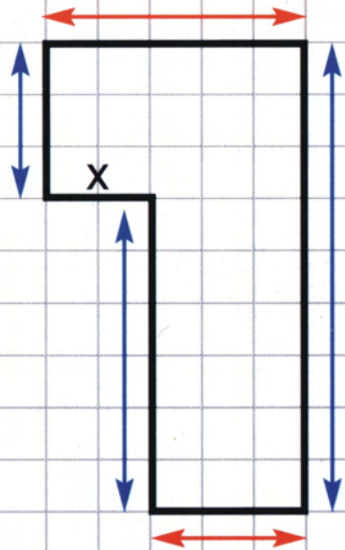
example



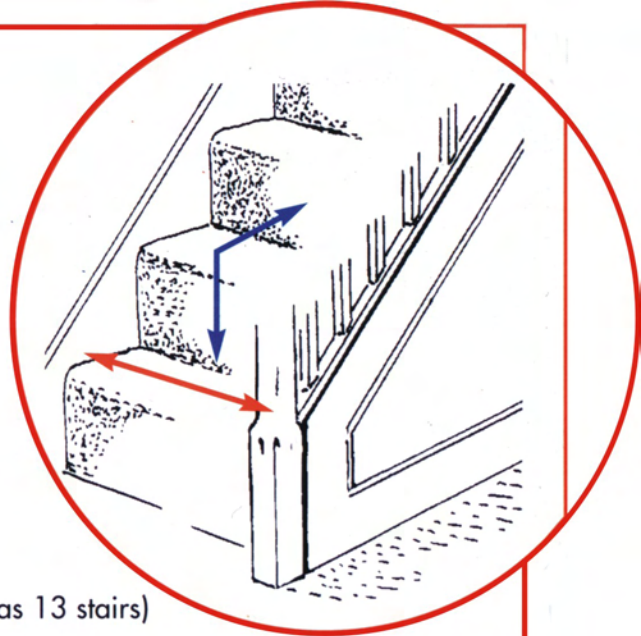
Mark position of stairs with a cross as shown



example



There is no need to measure the length of the stairs, simply fill in the boxes below. This is all you need for a simple staircase. However if your staircase has a half landing, a bullnose or winders simply follow steps c, d, and e.



The number of stairs

(An average staircase has 13 stairs)

Measure the tread and riser

(This will probably be slightly under 1'6" (45cm)  
*Blue line in example*

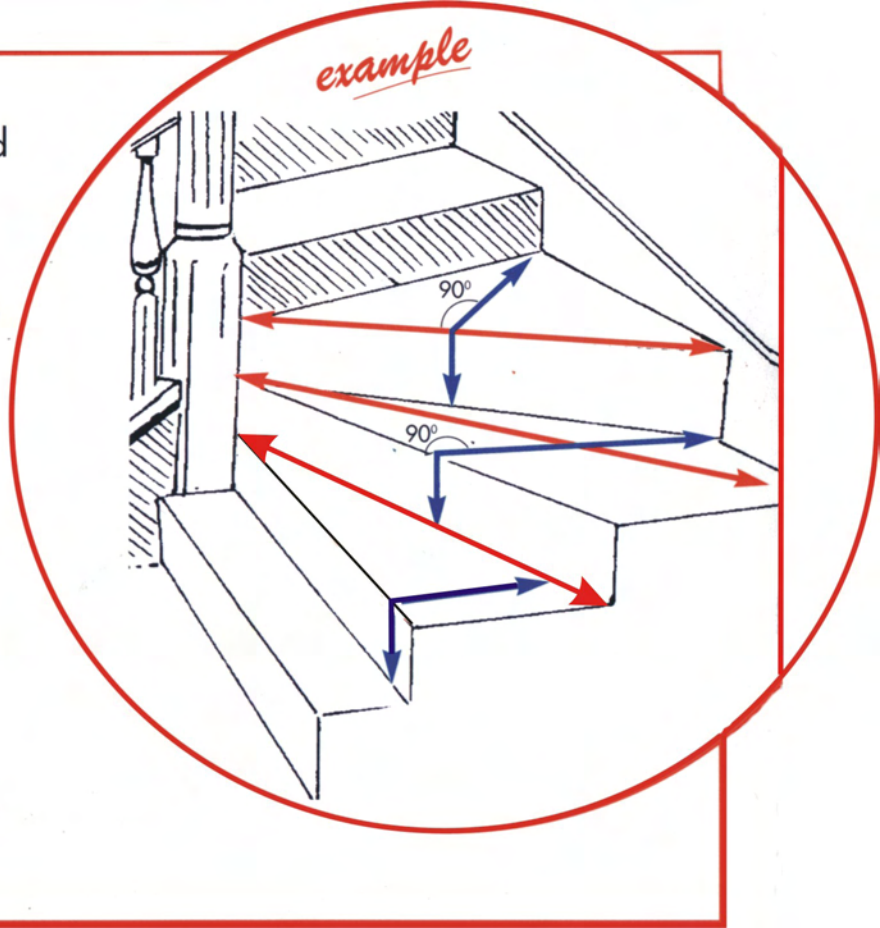
Measure the stair width

(This will probably be between 2'6" - 3' (76cm - 93cm)  
*Orange line in example*



Winders are the wedge rectangular shaped steps which, like a half landing, turn the stairs through 90 degrees. Simply take the following measurements for each winder. (Indicated on example) Again you may not have winders, if so ignore this step.

Winder. 1	90 degrees over step <input type="text"/>	x	Width at widest point <input type="text"/>
Winder 2	90 degrees over step <input type="text"/>	x	Width at widest point <input type="text"/>
Winder 3	90 degrees over step <input type="text"/>	x	Width at widest point <input type="text"/>



A bullnose is the odd shaped step at the bottom of some staircases. It is wider than a normal step and is rounded on either one or both sides. Simply take the following measurements.

The width around the skirt

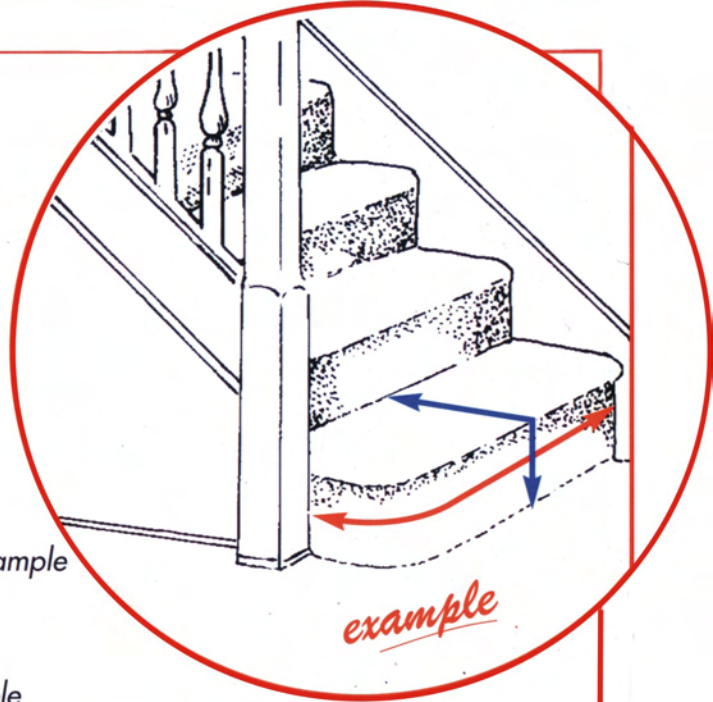


*Orange line in example*

The step and riser of bullnose

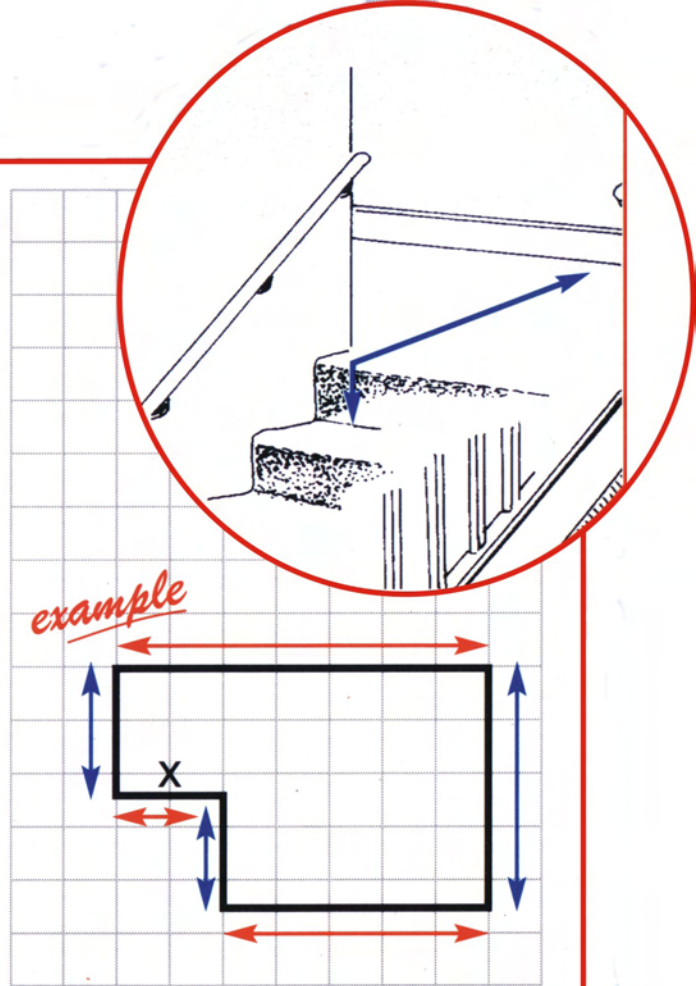
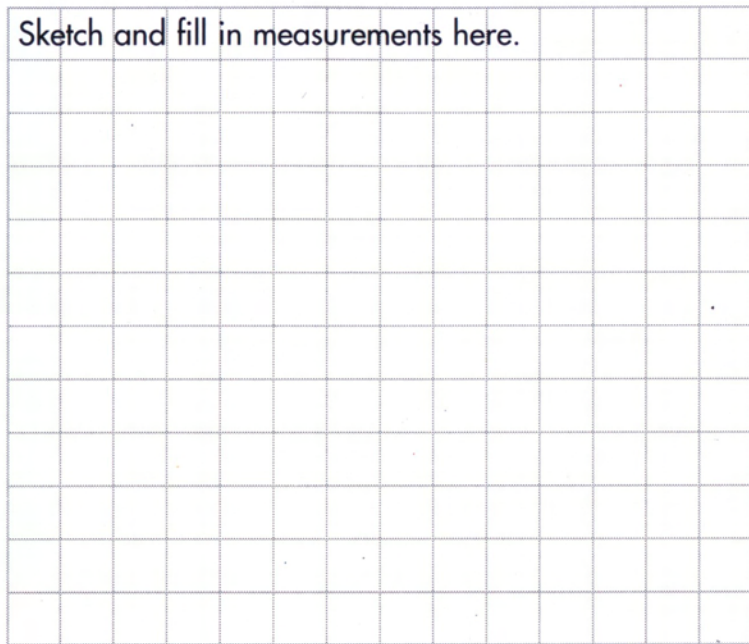


*Blue line in example*



Remember to measure over the top step and into doorways and recesses. Mark the position of your stairs with a cross as shown in one example.

Sketch and fill in measurements here.





A half landing is a large square shaped step usually half way up the stairs at the point that the stairs turn. If your stairs don't have one of these ignore this step.

The width across the half landing



*Orange line in example*

The length of the half landing including the drop over the step



*Blue line in example*

